

PICK UP AND DROP OFF

- We are excited to welcome back our scholars to Uplift Ascend! We have made some updates to our carline procedures due to some feedback about traffic concerns. It is of the utmost importance that we all adhere to these latest changes to our carline to continue community support of our school. Uplift Ascend, like all charter schools, must continually assess and ensure we are good neighbors and community members. Our goal is to create a carline that has minimal to no impact on our neighbors. Please help us by following the new carline plan below. If you are unclear about carline, please reach out to Jeff Fowler at jfowler@uplifteducation.org and he can help you.
 - **All scholars (Pre-k –12th grade)** will be assigned a carline number. Please display this carline number on your dash each day at pickup to assist with our dismissal procedures.
 - Once through the entry gates (Primary or Secondary) please drive slowly. The parking lot speed limit is 5 mph.
 - Sections of our carline are split to allow for two driving lanes. This will allow us to queue more cars on our property and prevent huge backups onto Turf Paradise Lane and Forest Hill Drive. When asked to merge into one lane please alternate lanes as they merge back into one lane.
 - Carline queuing will have a designated starting spot. Please do not park in front of Primary or Secondary building prior to dismissal. You will be asked to move your vehicle if this occurs. This is to allow for emergency vehicle access to our buildings should the need arise. See the attached map for where the carline queuing will start.

No walkers are permitted, unless you can prove that your 6th – 12th grade scholar lives **less than 2 miles from Uplift Ascend**.

- Everyone is required to use our car line for drop off and pick up.
- No families are allowed to pick up or drop off outside our gates.
- If you believe your 6th – 12th grade scholar qualifies as a walker who lives less than 2 miles from campus, complete the following form and someone from the school will contact you. Only addresses used for enrollment will be considered. [CLICK HERE](#) to access the form.
- The city of Fort Worth has put up no parking signs and will be enforcing these no parking areas.
- No scholars should be dropped off in the Hanna Ranch home addition at any time.
- No scholars are allowed to be dropped off on Forest Hill Road or at our Forest Hill Gate area.
- We will be staggering our academic start and end time to allow for a staggered arrival/dismissal.
 - If you have siblings, please come at the LATEST time to pick up all your scholars at once.

We also encourage you to review our new car line video with your scholar(s) for tips and tricks on how to make car line a breeze.

- English Car Line Video: <https://youtu.be/wMpHeauWcqg>
- Spanish Car Line Video: https://youtu.be/iPaJ5e_xbg

NEW DROP-OFF TIMES & LOCATIONS FOR UPLIFT ASCEND

PreK – 5th grade Morning Carline

- Drop-Off Location: Primary School (enter through last gate on Turf Paradise)
- Drop-Off Time: **7:15am**
- School starts at **7:45am**

6th – 8th grade Morning Carline

- Drop-Off Location: Secondary School (enter through the first gate on Turf Paradise)
- Drop-Off Time: **7:30am**
- School starts at **8:00am**

9th – 12th grade Morning Carline

- Drop-Off Location: Secondary School (enter through the first gate on Turf Paradise)
- Drop-Off Time: **7:30am**
- School starts at **8:00am**

NEW PICK-UP TIMES & LOCATIONS FOR UPLIFT ASCEND

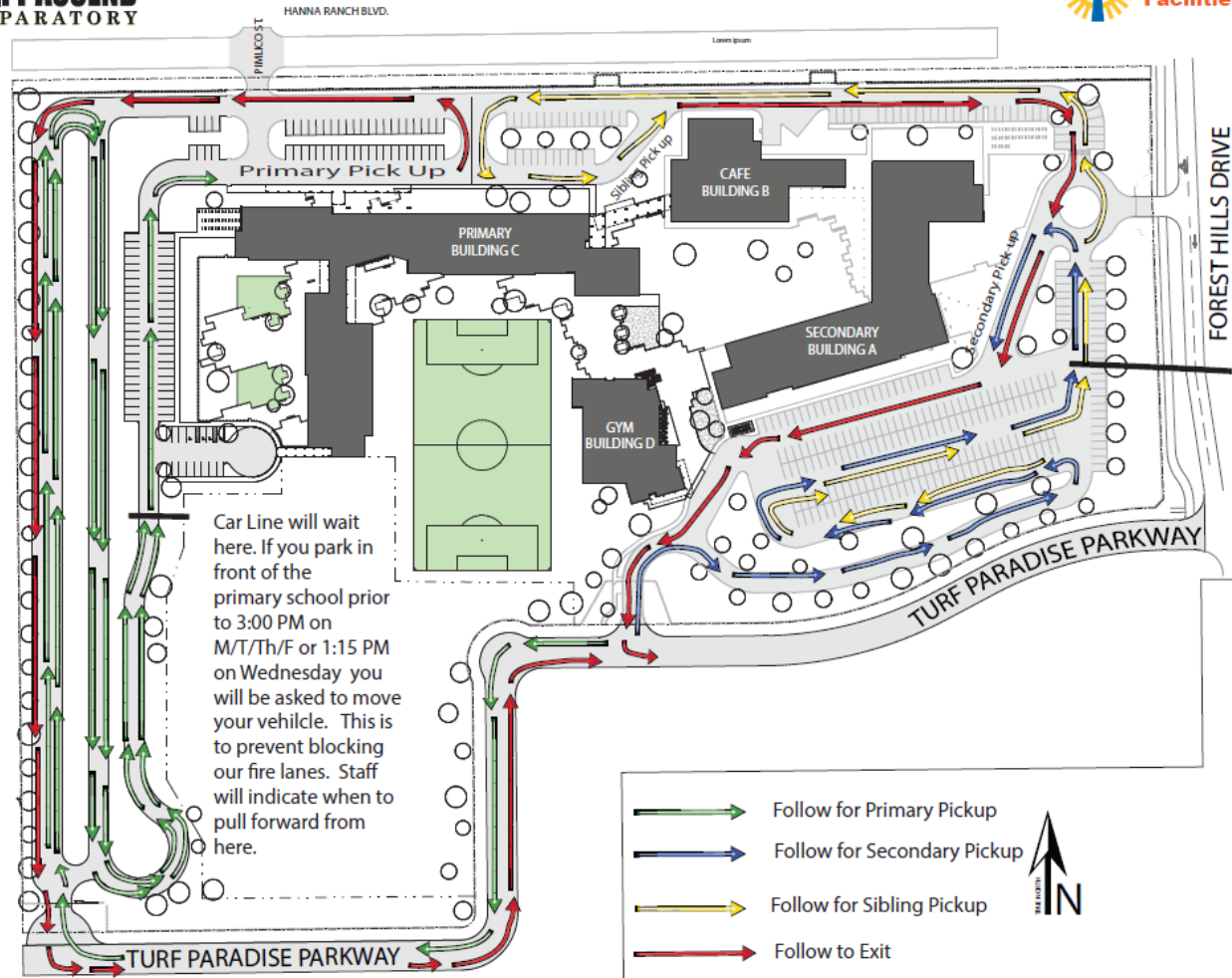
Pre-K – 5th grade Afternoon Carline - enter ONLY through the 2nd gate on Turf Paradise

- Pick-Up Location: Primary School (enter through the 2nd gate on Turf Paradise)
- Pick-Up Time:
 - **3:15pm** (Monday, Tuesday, Thursday, Friday)
 - **1:45pm** (Wednesday)
- If you need to pick up an older sibling, come at the OLDEST sibling's pick-up time and school location.
 - Example 1: If you have a 4th grader and 6th grader
 - Pick-Up Location: Secondary front entrance (enter through the 1st gate on Turf Paradise)
 - Pick-Up Time: **3:37pm / 2:42pm** (Wednesday)
 - Example 2: If you have a 3rd grader and 10th grader
 - Pick-Up Location: Secondary front entrance (enter through the 1st gate on Turf Paradise)
 - Pick-Up Time: **3:37pm / 2:42pm** (Wednesday)

6th – 12th grade Afternoon Carline – enter ONLY through the first entrance on Turf Paradise)

- Pick-Up Location: Secondary School (enter through the 1st gate on Turf Paradise)
- Pick-Up Time:
 - **3:37pm** (Monday, Tuesday, Thursday, Friday)
 - **2:42pm** (Wednesday)
- All scholars with siblings in PreK-5th grade, must be picked up through the secondary school car line (enter through the 1st gate on Turf Paradise)
- If you need to pick up a young or older sibling, come at the OLDEST sibling's pickup time
 - Example 1: If you have a 7th grader and 3rd grader
 - Pick-Up Location: Secondary cafe entrance (enter through the 1st gate on Turf Paradise)
 - Pick-Up Time: **3:37pm / 2:42pm** (Wednesday)
 - Example 2: If you have a 6th grader and 10th grader and 3rd grader
 - Pick-Up Location: Secondary cafe entrance (enter through the 1st gate on Turf Paradise)
 - Pick-Up Time: **3:37pm / 2:42pm** (Wednesday)
 - Example 3: If you have a 8th grader and 10th grader
 - Pick-Up Location: Secondary front entrance (enter through the 1st gate on Turf Paradise)
 - Pick-Up Time: **3:37pm**

Ascend Preparatory Afternoon Pick up



Please note that we will be managing two lines of traffic in our parking lot. This is represented where there are two sets of arrows going the same way. Please follow the markers and cones to ensure there are no accidents and everyone stays safe.